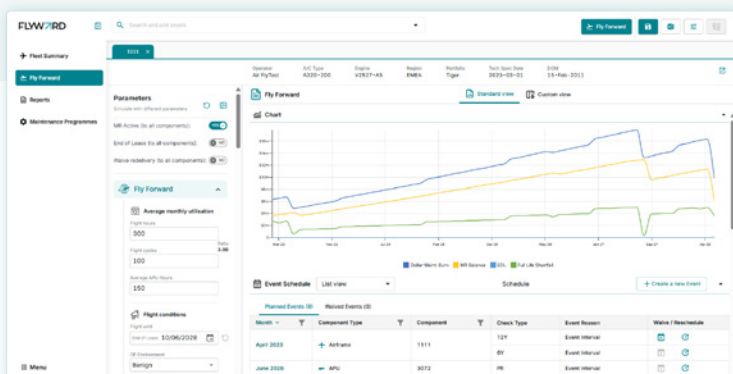


Analytics Console

Enhancements providing a new Fly Forward console with quick actions and a better and quicker interface

New Fly Forward console

Improved scenario modelling features



Fly Forward Event Management

Create, reschedule and delete events for all checks and components

The screenshot shows the 'Event Schedule' table in the Fly Forward console. The table has columns for 'Month', 'Component Type', 'Component', 'Check Type', 'Event Reason', and 'Waive / Reschedule'. It lists several events, including 'Airframe' (1111), 'APU' (3072), 'Engine' (V5678), and 'Landing Gear' (10812916J). The 'Waive / Reschedule' column contains icons for these actions.

Data Flows

Connect Maintenance Programs, assets and fly forward console.

Engine Strategy

Define scope, costs, and time of all engine events per check type.

Wiki Space

User Guides and walkthroughs

Upcoming Features in the June Release

- **PR Modular**
Allow the system to model and report on any scenario.
- **Chapter 5 and Ultimate Life Modelling**
Can compare and run fly forward scenarios using either ch.5 or ultimate life
- **Flex utilization during a Fly Forward**
Define time slots with different utilisations per components.
- **Support subsequent lease modelling**
Use fly forward outputs as inputs for a subsequent lease fly forward.
- **Letters of Credit**

PRODUCT ROADMAP

